

23rd May 2022

THE 61 PRIORITY MUNICIPALITIES UPDATED FOR CROP YEAR 2020/21 vs. PRODES 2020

JOEL RISSO

 joel@agrosatelite.com.br

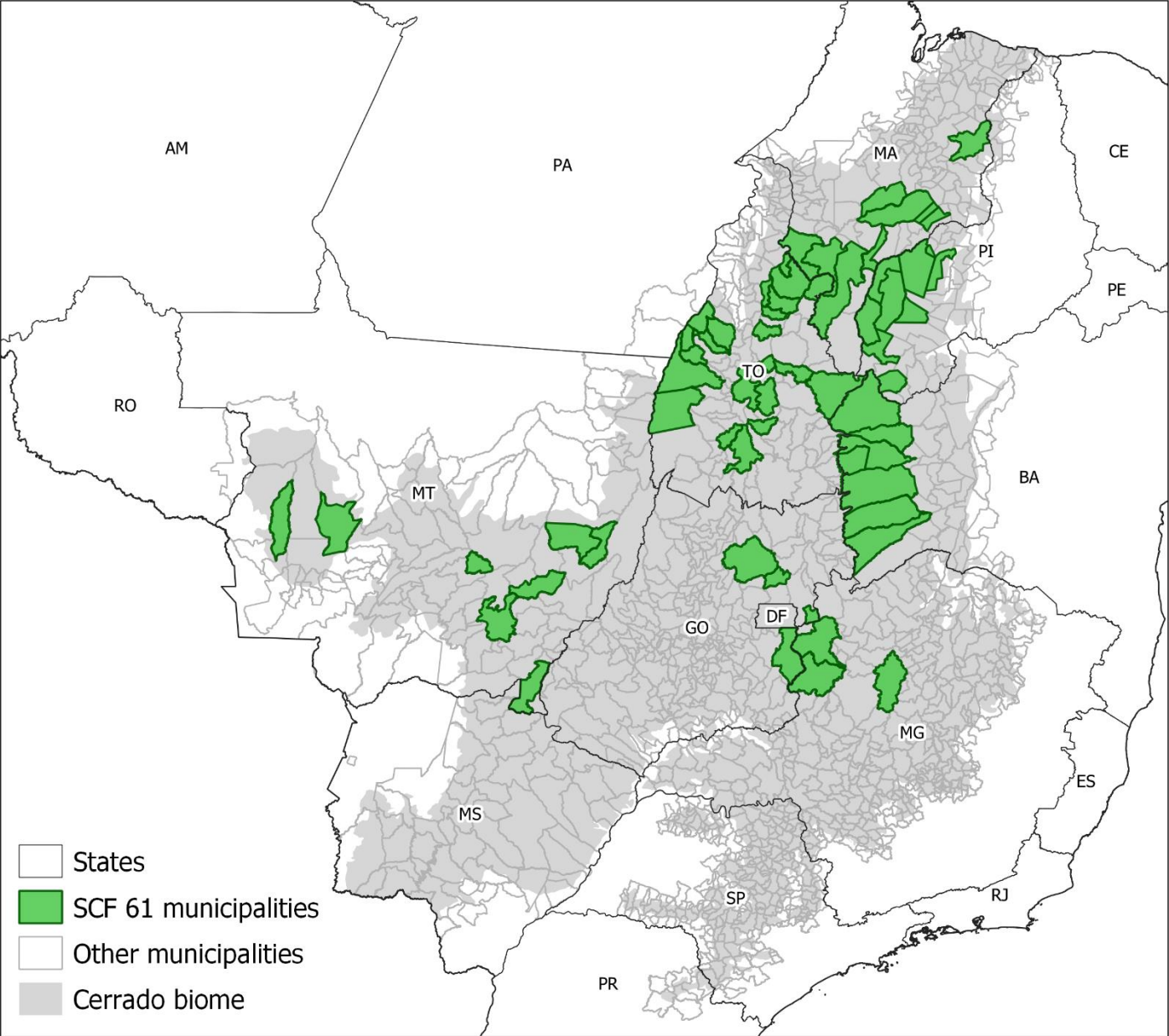
 +55 (48) 98856-5670

Accomplished by:



agrosatélite

STUDY AREA | 61 Municipalities



SUMMARY OF RESULTS | 61 Municipalities

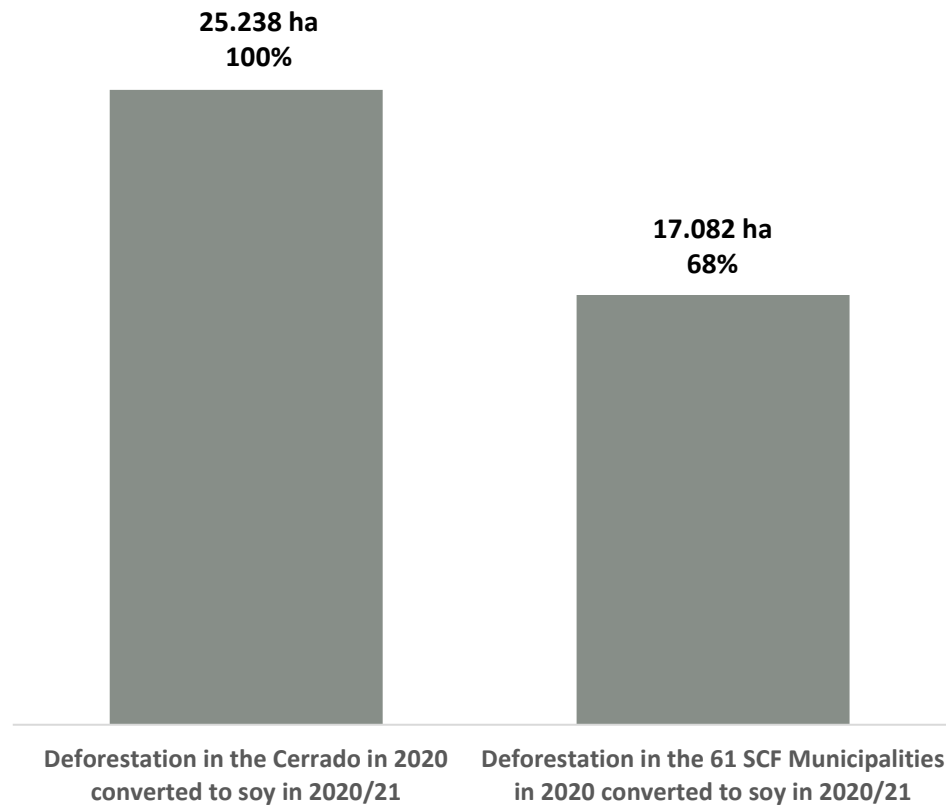
- **Average soy yield** of the 61 municipalities, based on available information of IBGE* for the last three crop years (2017/18, 2018/19 and 2019/20): **3.190,5 kg/ha**;
- **Soy area** in the 61 municipalities in crop year 2020/21: **5.252.004 ha**;
- **Soy production** in the 61 municipalities in crop year 2020/21: **17.849.902 tons**;
- **Total area of Native Vegetation Conversion (NVC) in 2020** (PRODES**) in the 61 municipalities: **184.033 ha**;
- **Soy area in NVC of 2020** in the 61 municipalities: **17.082 ha**;
- **Soy production in NVC of 2020** of crop year 2020/21 in the 61 municipalities: **57.449 tons**;
- **Soy production free of NVC of 2020** of crop year 2020/21 in the 61 municipalities: **17.792.453 tons**;
- **Percent of soy production free of NVC of 2020** in crop year 2020/21 in the 61 municipalities : **99,68%**

* IBGE - Brazilian Institute of Geography and Statistics

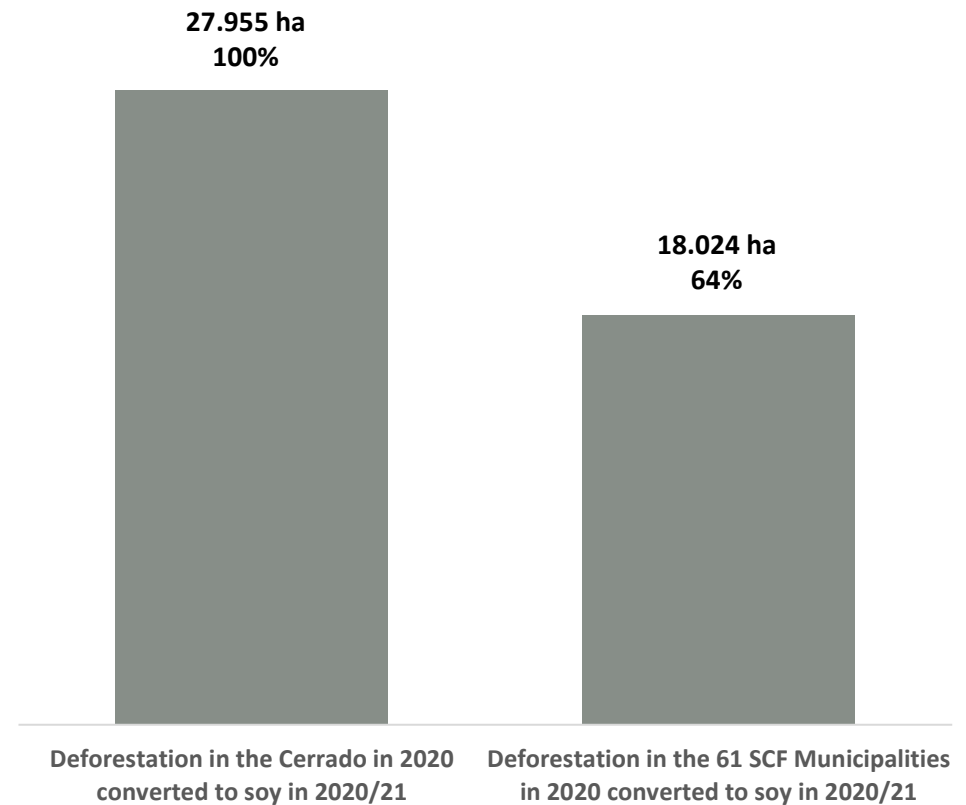
**Adopting a threshold of 25 ha as minimum deforested area mapped by PRODES

SOY 2020/21 and PRODES-2020 | With and Without threshold of 25 hectares

d) Deforestation (PRODES 2020 **with threshold**) converted to soy. Soy in crop year 2020/21 in deforestation of 2020 was 25.238 hectares in the Cerrado and 17.082 hectares in the 61 SCF municipalities (68% of Cerrado's conversion to soy).



d) Deforestation (PRODES 2020 **without threshold**) converted to soy. Soy in crop year 2020/21 in deforestation of 2020 was 27.955 hectares in the Cerrado and 18.024 hectares in the 61 SCF municipalities (64% of Cerrado's conversion to soy).



There is a relative difference of 5% between the soy in deforestation of 2020 with and without the threshold of 25 hectares.

23rd May 2022

THE 61 PRIORITY MUNICIPALITIES UPDATED FOR CROP YEAR 2020/21 vs. PRODES 2020

JOEL RISSO

 joel@agrosatelite.com.br

 +55 (48) 98856-5670

Accomplished by:



agrosatélite