

# FARMER FIRST CLUSTERS



## INVEST IN A SUSTAINABLE SOY FUTURE

## OUR MISSION

Investment in Cerrado landscape approaches can incentivize soy production that supports forest and land conservation.

The Farmer First Clusters is based on the creation of a new financial model and a smart-mix of solutions.

Our vision is to accelerate investments that benefit climate, nature and livelihoods.

## HOW IT WORKS

1

### We accelerate solutions that best incentivize farmers

#### Integrated Farming

Integrated livestock, crops and forests, ensuring more sustainable land use



#### Restoration of Degraded Land

Native vegetation restoration on degraded pastureland

#### Sustainable Production + Forest Code Compliance

Technical assistance to increase sustainable production and Forest Code Compliance

#### Surplus Legal Reserve

Compensation payment to soy farmers who could legally deforest

#### Green Finance

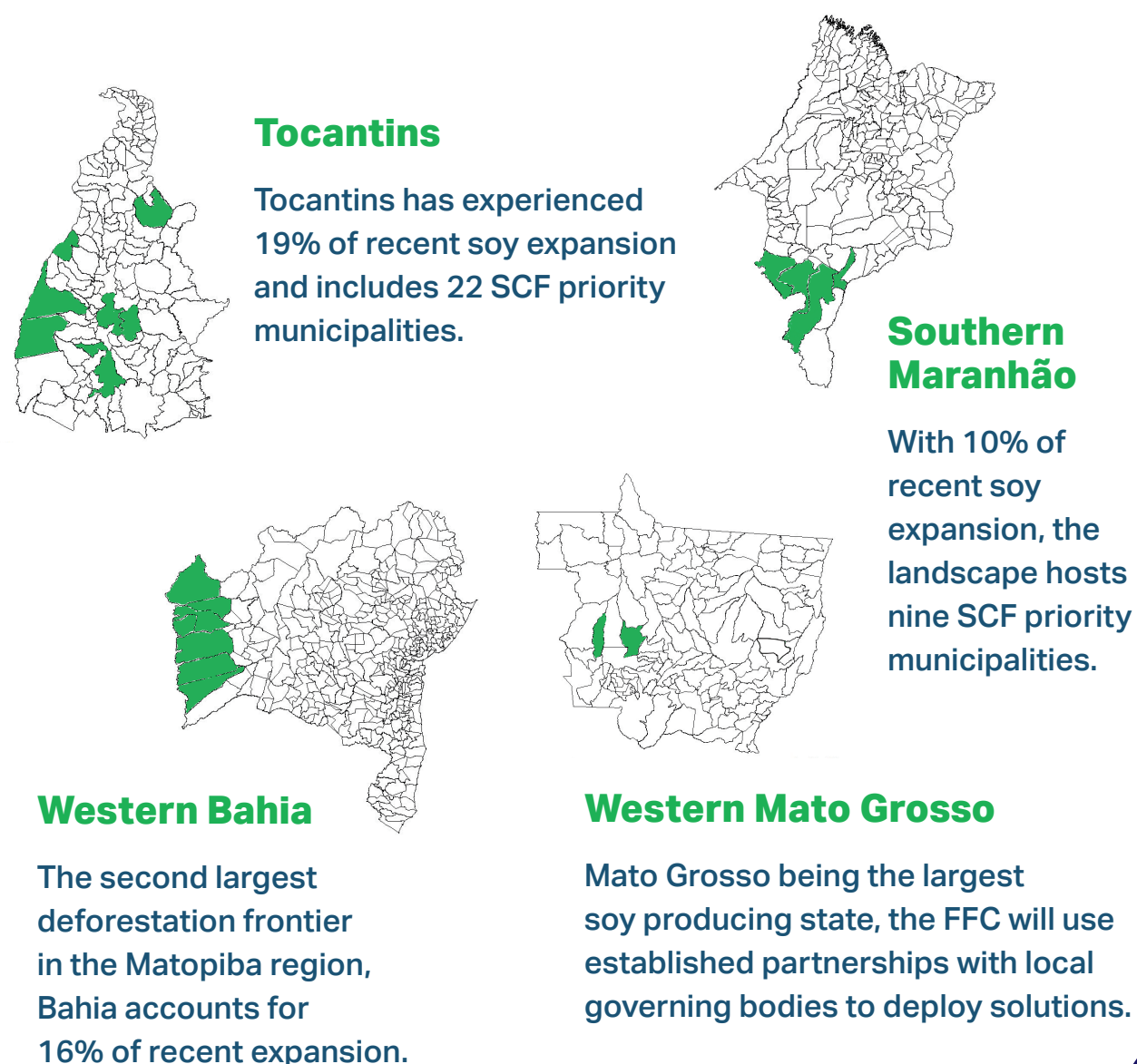
Favorable finance in exchange for zero deforestation commitments

#### Expansion over Pastureland

Incentives for soy expansion over pasture + intensification of cattle production to free up existing pasture

2

### We "cluster" investment where it matters most



3

### We maximize impact for climate, nature and equity

## INDICATORS



#### Greenhouse gas emissions

GHG emission reductions mitigate climate change and are scalable to other regions

#### Land use change

Regenerative agricultural practices lead to land and water conservation and higher yields, reducing the demand for native vegetation conversion.

#### Farmer livelihoods

By engaging farmers and local experts, we strive toward long-term economic returns that can encourage others to follow.

## THE FARMER FIRST CLUSTERS INITIATIVE WOULDN'T BE POSSIBLE WITHOUT COMMITTED PARTNERS

### Private sector partners



### Implementing partners



### In collaboration with



## JOIN US IN OUR ENGAGEMENT TO TRANSFORM CERRADO LANDSCAPES

We believe \$50 million are required to stand up the Farmer First Clusters.

To get involved:

Ricieri Vidal Marchi: [vidal-marchi@wbcsd.org](mailto:vidal-marchi@wbcsd.org)